



EDUCATION SUPPORT PROGRAM (ESP)

Forming Partnership For Education

September 1, 1991 to December 31, 1993



BRAC

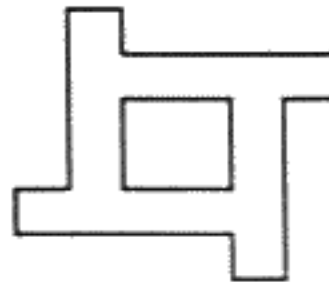
66, MOHAKHALI C/A
DHAKA-1212, BANGLADESH

January 1994

EDUCATION SUPPORT PROGRAM (ESP)

Forming Partnership For Education

September 1, 1991 to December 31, 1993



BRAC
66, MOHAKHALI C/A
DHAKA-1212, BANGLADESH
January 1994

INTRODUCTION

To mobilize partnership for Non-formal primary Education for the eradication of illiteracy in Bangladesh, BRAC undertook the Education Support Program (ESP) in September 1991. By December 31 1993, ESP had extended its support to 70 non-government organizations (NGOs) for 2163 NFPE schools. BRAC's ESP has been providing technical support to all these organizations. Technical as well as financial support is being provided to forty seven NGOs, 26 from November 1991, 20 from November 1992, and one from January 1993, for 374 schools. Among these 374 schools, 129 are now in their second year and will start year three in February 1994. Two hundred thirty five (235) schools are now running class-I and will start second year courses from February/March 1994. For the remaining 10 schools, preliminary work has begun. These schools are expected to open in February 1994. For the administration of the Non-formal Primary Education Program (NFPE), each organization has appointed one Program organizer. ESP comprises of one Program Manager and six experienced Program organizers. These 374 schools are being funded mainly by BRAC's own resources. OXFAM-UK is the only donor and has been providing funds for 100 schools.

RATIONALE FOR UNDERTAKING ESP

BRAC's Non-formal Primary Education (NFPE) went into operation in 1985 with 22 schools and 667 students. Soon it was proved that NFPE was cost effective, relevant for social change with regard to the position of girls, and could provide a workable solution to the problems of primary education in rural Bangladesh. As a World Bank sponsored evaluation study suggests "to cover children of the disadvantaged communities under this non-formal education

program, BRAC's ideas, policies, and strategies may appropriately be utilized" (Begum, K. and others, 1988, p. 124).

Before September 1991, attempts had been made by some NGOs to replicate the NFPE model. Although no indepth study was made to measure the degree of success of these efforts, off hand observations showed that none of the NGOs involved could run schools successfully over a full course period successfully as per NFPE standard operational procedures. This not only involved a waste of funds for the organizations concerned but meant a waste of time for BRAC who had invested much training and professional time into these ventures. Recognizing this and to help eradicate illiteracy from Bangladesh, BRAC undertook the Education Support Program (ESP) in September 1991. Through ESP BRAC hopes to share its expertise in (a) school organization, (b) teacher training, (c) staff training, (d) classroom management and instruction, (e) making the community participate in the program, (f) school supervision, (g) progress monitoring, and (h) development of curriculum and materials with other organizations.

GOAL OF ESP

The goal of ESP is "to form partnership for non-formal primary education with organizations working in Bangladesh and to develop their technical, conceptual, and human skills to replicate BRAC's NFPE model successfully."

OBJECTIVES OF ESP

The main objectives of ESP are to:

form partnership for non-formal primary education;

- develop partner organizations' skills to replicate BRAC's NFPE model;
- ensure women's participation in the implementation and management of primary education program;
- minimize wastage of time, money, and human potential in primary educational enterprises in Bangladesh;
- promote girls education; and
- support national efforts towards basic education for all.

THE ESP PARTNERS

By December 31 1993, ESP had formed its partnerships for non-formal primary education with 70 NGOs. ESP has been providing technical support to all these 70 organizations. Forty seven NGOs have been receiving technical as well as financial support from BRAC. Among these 47 NGOs, 26 NGOs have been receiving 58 percent of the total cost of the program from BRAC. From November 1991, BRAC's support was for 130 NFPE schools (five schools for each organization). These schools were opened in March 1992. Performance of these schools were far above the expectation of the partners. The success of these schools motivated the partners to open more schools. In January 1993, BRAC's ESP extended its financial support to an additional 125 NFPE schools, belonging to 25 organizations of the 26 organizations mentioned above. For these 125 schools, ESP bears the full cost. From November 1992, ESP has been providing full financial support to 20 NGOs for 100 NFPE schools (five schools for each). In January 1993, ESP further extended its financial support to one more NGO for 20 schools. Twenty three partner NGOs provide the funding for their respective NFPE programs

from their own sources.

Partners receiving financial support from BRAC's ESP

It is already mentioned that 47 NGOs have been receiving financial support from BRAC's ESP for 374 NFPE schools. Estimated cost of these 374 schools for three years is Taka 23,959,937 and, the cost per school for three years is Taka 64,064 approximately. Cost per child per year is Taka 712 or US dollars 17.79. Most of the NGOs are local and small. A few of these NGOs are based in Dhaka. On an average, the yearly budget of these organizations is Taka 1,587,741 and the number of permanent staffs is 16. Names of these NGOs, their NFPE locations, and no. of schools are shown in table 1.

TABLE 1

Partners receiving financial support from BRAC's ESP

Sl No	Name of partner	NFPE location	No. of schools
1.	Shacrio Sangho Bheramara, Kustia	Bheramara	10
2.	Purbasha Juba Sangha Kumarkhali, Kustia	Kumarkhali	10
3.	Resource Integration Centre (RIC) 3/9, Block- C, Lalmatia Dhaka- 1207	Perojpur	10
4.	Bonoful 172, Khan Jahan Ali Road Khulna	Khulna	10

5.	Faridpur Development Agency (FDA) Gopalpur, Faridpur	Faridpur	10
6.	ASHRAI 1/9, Block- D, Lalmatia Dhaka- 1207	Niamotpur, Naogaon	10
7.	Rural Development Foundation (RDF) Dawlatgonj, P.O. Laksam, Comilla	Laksam, Comilla	10
8.	Pally Bikash Kendra (PBK) 20/7, Babor Road, Block-B Mohammadpur, Dhaka- 1207	Motkhola, Pakundia	10
9.	SHIMANTIK Shimantik Bhaban P.O. Isamati, Sylhet	Zokigonj, Sylhet	10
10.	Centre for Community Development (CCD) Adampur, Raipur, Daudkandi, Comilla	Raipur, Daudkandi	10
11.	Adarsha Paribar Sangstha Gouripur, Mymensingh	Gouripur	10
12.	Juba Unnayan Samaj Seba Samity Sarail, Brahmanbaria	Sarail	10
13.	UTHSARGA Bhairab, Kishoregonj	Bhairab	10
14.	Sabalambay Unnayan Samity Shibgonj Road, Netrokona	Netrokona	48*
15.	Community Development Association (CDA), Netrokona	Netrokona	10
16.	PIACT 1/7, Block- A, Road- 5 Lalmatia Housing Estate Dhaka- 1207	Araihazar	10

17.	Nari Uddug Kendra (NUK) 22/18, Khilji Road Block-B, 2nd floor Mohammadpur, Dhaka-1207	Savar	10
18.	Probaha Samaj Seba Sangstha Guradia, Narsingdi	Narsingdi	10
19.	Unmesh Mohila Club Gopalpur, Tangail	Gopalpur	10
20.	Mouchas Unnayan Sangstha Modhupur, Tangail	Modhupur	10
21.	Village Education Resource Centre (VERC) Savar, Dhaka	Savar	5
22.	Life- Bangladesh Saidpur, Nilphamari	Saidpur	10
23.	UST House-739, Road-9 Baitul Aman Housing Society Adabor, Shyamali Dhaka- 1207	Saghata, Gaibanda	14*
24.	Together for Service of People (TSP) 46, New Elephant Road Dhaka- 1205	Faridpur, Pabna	10
25.	Uttaran Mohila Sangstha Mujib sarak, Serajgonj	Serajgonj	10
26.	Kanchan Samity Hospital Road, Dinajpur	Dinajpur	10
27.	Palli Unnayan Kendra (VDC) P.O+Dist. Madaripur	Madaripur	5
28.	SETU 12/2, Arjun Das Agarwala Road, Courtpara, Kustia-7000	Mirpur, Kustia	5

29.	Jagrata juba Sangha Hafiz sarak, Talimpur Rupsha East, Khulna-9241	Rupsha, Khulna	5
30.	Sahco development Centre (SDC) Amin Court (2nd floor) 62-63 Motijheel C/A Dhaka- 1000	Kalkini, Madaripur	5
31.	Bikalpa Unnayan Karmashuchi (BUK) Jordon Road, Barisal-8200	Barisal Sadar	5
32.	Palli Gono Unnayan Kendra P.O. Padrishibpur, Bakergonj Barisal	Bakergonj	5
33.	Aloshikha R.S.D Centre Vill+P.O- Rajihar Agailjhara, Barisal	Agailjhara	5
34.	Sanghatitha Karma Sangsthan Prokalpa (SANKALPA)	Pathorghata	5
35.	Integrated Social Development (ISD) Vill+P.O- Dhandopa Barisal	Gournadi	5
36.	Social Development Society (SDS) Club Road, Barisal-8200	Babugonj	5
37.	Moukhara B.S.K Songstha Vill. Moukhara, P.O. Nawparahat Natore	Natore	5
38.	Family Planning Association of Bangladesh, (FPAB) C&B Road, Jamalpur	Jamalpur	5
39.	Dwip Unnayan Sangstha (DUS) P.O. Chowrangee Bazar Hatiya, Noakhali	Hatiya	5

40.	Community Development Association (CDA) Block No. 1, Upasahhar Dinajpur	Birgonj	20*
41.	Samata Samaj Jallayan Samity Vill. Bishnupur, Post- Dulai Dist.- Pabna	Sujanagar	5
42.	Palli Progoti Sangstha Vill. Amragohail Nandigram, Bogra	Nandigram	5
43.	MOUSUMI House No. 384 (ground floor) Road No. 10, Baitul Aman Housing Society, Adabor, Shamoli Dhaka- 1207	Naogaon Sadar	5
44.	Foundation for Education and Health Welfare (FEH) 26, Naya Paltan, 2nd floor Dhaka	Lalmonirhat	5
45.	Samajik Unnayan Sangstha P.O. Dapdapia, Jhalakathi	Jhalakathi	5
46.	Shibgonj Seba Complex Shibgonj Bazar Chapai Nababgonj	Shibgonj	5
47.	BAWPA 2/22 Tazmahal Road Block-C, Mahammadpur Dhaka- 1207	Sarishabari and Kapasia	20

* Though Sabalamby Unnayan Samity is getting financial support for 9 schools, UST is getting financial support for 10 schools, and CDA for 5 schools, they are running 48, 14, and 20 schools respectively.

Partner not receiving financial support from ESP

Twenty three NGOs have been providing funding to their NFPE programs from their own

resources. These NGOs buy BRAC materials (printed materials) and training. Among these NGOs Uttaran, Bachte Chai, Dulai Jana Kallayan Samity, Social Institute, and Gana Unnayan Kendra have been receiving monitoring and supervision services from ESP on a service-on-payment basis. Names of these NGOs and the number of schools (ongoing and under process) are shown in table 2. (As these NGOs do not submit reports to ESP, the figures below may differ a little from the actual).

TABLE 2

Partners not getting financial support from ESP

Sl No	Name of Partner	No. of schools		
		On-going	On-process	Total
1.	World Vision of Bangladesh	26	-	26
2.	CODEC	181	70	251
3.	World Concern	30	-	30
4.	Pioneer	30	-	30
5.	ARBAN	92	-	92
6.	Action Aid	5	-	5
7.	ASOD	20	-	20
8.	Dulai Jana Kallayan Samity	18	-	18
9.	Bachte Chai	7	-	7
10.	Jagorani Chakra	275	-	275
11.	HEED-Bangladesh	17	40	57
12.	Gana Unnayan Kendra	20	-	20
13.	PROSHIKA (Dhaka)	150	117	267
14.	UTTARAN	20	-	20
15.	Unnayan Sahayak Sangstha	10	-	10
16.	RDRS	335	204	539
17.	Adarsha Samaj Seba Samity	10	-	10
18.	Rangpur Unnayan Samajik Sangstha (RDSS)	15	-	15
19.	Social Institute	5	-	5
20.	Bangladesh Nari Progati Sangstha	4	-	4
21.	Shishu Sastha Foundation	2	-	2
22.	Korean Dev. Agency in Bangladesh	-	3	3
23.	Bangladesh Unnayan Parishad	-	25	25

THE ESP FINANCED SCHOOLS (ESP NFPE SCHOOLS)

BRAC's Education Support Program (ESP) is now funding 374 NFPE schools. Among these, 364 schools are on-going and 10 schools are in a preliminary stage. These 10 schools are expected to open in February 1994. Total enrolment in 364 schools is 10,920 with an average enrolment of 30. More than 74 percent of the students are girls. Children aged 8-10 years are enrolled in ESP NFPE schools. Among the 364 ongoing schools, 129 are now in their second year and will begin third year courses from February 1994. A list of second year schools (by organisation); number of students and the percentage of boys and girls are shown in appendix A. Two hundred thirty five (235) schools are now in their first year of school and will begin class-2 courses from February/March 1994. A list of first year schools, number of students, and the percentages of boys and girls are shown in appendix B. Average student attendance in the ESP NFPE schools is 94.02 percent. In the class-1 schools the average attendance is 94.67 percent and in the class-2 schools average attendance is 93.37 percent. Student attendances in class-1 and class-2 are shown (by organisation) in appendixes C and D respectively. Student performance is satisfactory. Strategies, likely to ensure the learning of every child are carefully followed in ESP NFPE schools. The children learn what they are expected to learn. Along with the set curricular' co-curricular activities in the ESP NFPE schools are also designed to help develop student abilities. By December 31 1993, the total number of dropout children was six (6) with death being the case of two. Dropout, in terms of failure to continue study (UNICEF definition) is therefore, four or 0.04 percent.

There is one teacher for each of the 364 schools. Three hundred forty nine or 96 percent of teachers are female, 280 or 77 percent of the total number of teachers have passed their

Secondary School Certificate examination. Appendix E gives information about the teaching staff, their academic qualifications, and marital status.

The ESP NFPE schools look like NFPE schools. ESP NFPE schools pay a monthly rent of Tk.100-150 to the house owner. Community participation is greatly valued in ESP NFPE. ESP partners have realized that no program can be successful without the active participation of its beneficiaries. To administer the program, each of the 47 partners has appointed one or two Program Organizer(s). Most of the Program organizers are graduates or hold a masters degree. They perform all field activities including the facilitation of teacher refresher courses.

IMPLEMENTATION AND MANAGEMENT OF ESP PROJECTS

The most important feature of ESP management is that ESP gets the work done through others. ESP implements its projects through partner NGOs. The Manager of the ESP program is entrusted with the responsibilities of the projects within the present administrative structure of BRAC. Six experienced Program organizers (POs) have been deployed to assist the Manager. The Organogram of ESP is given in appendix F.

To implement ESP projects, the following strategies are followed.

Before starting operations at the field level, a 2-day orientation program on NFPE and ESP is organized by ESP for the partner NGO heads. ESP firmly believes that for the successful replication of NFPE the heads of the partner NGOs must fully appreciate the program design and should have a positive attitude toward NFPE and ESP.

To look after the NFPE program, each of partner organization has its own Program organizer (s). Most of the Program Organizers are graduate or hold a masters degree.

Program Organizers of partner NGOs are responsible for all field level activities. The POs of partner organizations are also provided a 4-day training on school organization prior to being deployed at the field level.

Selection of a village, the children, the teacher, arrangement of school room, organization of parents, organization and facilitation of teacher refresher courses, school supervision, and other activities are performed by POs of partner NGOs. They do these in consultation with the POs of ESP and their respective supervisors in their own organizations and on the basis of guidelines provided by them.

POs of partner NGOs are accountable to the respective supervisors of their own organizations. But they submit weekly and monthly reports on the progress of project activities to ESP.

ESP provides training to the teachers and staff of partner NGOs, no NGO is provided with NFPE materials (printed) before receiving 12-day teacher training.

The POs of partner NGOs usually visit each school twice a week. During the visit they carefully observe the progress of school activities and provide suggestions to the teachers to develop instructional strategies and classroom management.

The POs of partner NGOs submit weekly and monthly school visit reports and the reports on monthly parents meeting to ESP. They also submit these reports to their respective supervisors. ESP provide feedback on these reports.

ESP POs visit the partner NGOs and their schools once in a month. They check the validity of the reports and provide feedback on the progress of the project activities to the concerned POs of partner NGOs and NGO heads and suggest measures to improve the quality

of the program. During their visit, they carefully observe various aspects - person, material, and money management, school activities, student achievement, and others and collect information needed to prepare a report in the format titled "MONITORING OF NFPE UNDERTAKEN BY PARTNER ORGANIZATION" (Appendix G) developed by ESP. The form contains 34 items to be rated on a five-point rating scale. ESP POs are equipped with the necessary knowledge, skills, and attitude to rate the indicators objectively.

Fifty two NGOs are now receiving supervision and monitoring services from ESP. Considering the NFPE locations of the partner NGOs, ESP has divided them into six areas. Six ESP POs are working as In-charge of these six areas. Most of them are based at BRAC's field offices. Appendix H shows the areas, the NGOs within each area, and the respective person charge.

ESP POs submit monthly monitoring reports on NFPE program of partner NGOs to the Manager, ESP. The ESP Manager also visits the partner NGOs and their schools periodically. He provides feedback to Pos of partner NGOs, heads of the partner NGOs, and to ESP POs. He suggests or takes measures to maintain or improve the quality of the project.

ESP provides financial supports to the partner NGOs in goods, services, and money. Goods are provided in three instalments. Each instalment covers the requirements of one year. Money is provided in six instalments. This has been proved to be an effective strategies to minimize BRAC cost and to check wastage and misappropriation.

COST OF ESP NFPE

ESP has been providing financial support to 47 NGOs for 374 NFPE schools. Estimated

cost of these 374 schools for three years is Taka 23,959,937 which includes Taka 1,895,042 is for ESP's consultancy, monitoring, and supervision services. The average, cost per child per year is Taka 712 or US dollars 17.79.

ESP'S THREE YEAR EXPANSION PLAN

ESP began its activities in September 1991. Though from its very inception ESP has been working on a very tight budget, it is now evident that ESP NFPE model is effective and efficient. Past experience has encouraged ESP to look forward and to prepare a three year plan; for the period January 1994 to December 1996. (This is a tentative expansion plan as funds needed for scaling up not yet been confirmed.)

TABLE 3

The three year expansion plan of ESP

Year	Partner NGOs			Schools					
	Existing	Would be	Total	On-going	Would be			Closed	Balance
					By existing partners	by new partners	Total		
1994	47	20	67	374	370	100	470	-	844
1995	67	20	87	844	425	100	525	130	1239
1996	86	14	100	1239	735	140	875	235	1879

Underlying assumption

1. In the year 1994, each of the 25 partners (of 1991) administering 10 schools now will open 10 new schools. The 20 partners (of 1992) administering 100 schools (five schools each)

will open 100 schools. Khet Mojur Samity (now BAWPA) will open 20 schools in two areas. One hundred schools will be opened by 20 new partners (of 94).

2. In the year 1995, 130 schools being administered by 26 partners (of 1991) will complete their courses. One hundred twenty five schools will be reopened by 25 partners. Partnership with one NGO will be discontinued. Each of the 20 partners (of 1992) supposed to run 10 schools then will open 10 new schools. Twenty partners (of 1994) supposed to run 100 schools, will open 100 new schools. One hundred schools will be opened by 20 new partners (of 1995).

3. In the year 1996, 235 schools run by 46 partners will complete their courses and 235 schools will be reopened by these partners. Twenty partners (of 1994) supposed to run 200 schools will open 200 new schools. The 20 partners (of 1995) supposed to run 100 schools (five schools each) will open 300 new schools and, one hundred forty schools will be opened by 14 new partners.

4. The above depend on the availability of necessary fund.

CONCLUDING REMARKS

ESP has been working for the last three years. It has proved that partnership among non-formal primary educational organisations in Bangladesh can work effectively and efficiently. ESP has been providing financial support to 47 NGOs for 374 schools. Among these 374 schools, 364 schools are on-going. Two hundred thirty five schools are now running class-1. One hundred twenty nine schools are running class-2. Average attendance of students in the ESP NFPE schools is 94.02 percent. In class-1 average attendance is 94.67 percent and in the class-2 schools average attendance is 93.37 percent. Student achievement is satisfactory. In the ESP

will open 100 schools. Khet Mojur Samity (now BAWPA) will open 20 schools in two areas. One hundred schools will be opened by 20 new partners (of 94).

2. In the year 1995, 130 schools being administered by 26 partners (of 1991) will complete their courses. One hundred twenty five schools will be reopened by 25 partners. Partnership with one NGO will be discontinued. Each of the 20 partners (of 1992) supposed to run 10 schools then will open 10 new schools. Twenty partners (of 1994) supposed to run 100 schools, will open 100 new schools. One hundred schools will be opened by 20 new partners (of 1995).

3. In the year 1996, 235 schools run by 46 partners will complete their courses and 235 schools will be reopened by these partners. Twenty partners (of 1994) supposed to run 200 schools will open 200 new schools. The 20 partners (of 1995) supposed to run 100 schools (five schools each) will open 300 new schools and, one hundred forty schools will be opened by 14 new partners.

4. The above depend on the availability of necessary fund.

CONCLUDING REMARKS

ESP has been working for the last three years. It has proved that partnership among non-formal primary educational organisations in Bangladesh can work effectively and efficiently. ESP has been providing financial support to 47 NGOs for 374 schools. Among these 374 schools, 364 schools are on-going. Two hundred thirty five schools are now running class-1. One hundred twenty nine schools are running class-2. Average attendance of students in the ESP NFPE schools is 94.02 percent. In class-1 average attendance is 94.67 percent and in the class-2 schools average attendance is 93.37 percent. Student achievement is satisfactory. In the ESP

NFPE schools the teachers follow instructional strategies that are likely to ensure the learning of every child. Cost per child per year in the ESP NFPE schools is Taka 712 or US dollars 17.79. Hence ESP NFPE is effective and efficient both technically and economically. Cost could be reduced remarkably if ESP could extend its support to the existing partners to open more schools. For example, per child cost per year would reduce to Taka 691 or US dollars 17.29 instead of Taka 712 or US dollars 17.79 if we could open 100 schools through 20 existing partners. Considering the above realities ESP desires to extend its financial support to 100 NGOs for 1879 schools at the end of 1996. Effort of the partners (not receiving financial support from BRAC) to eradicate illiteracy from Bangladesh is also praise worthy. ESP is keen to provide them with every kind of technical support possible.

Appendix A**Student in Class II
ESP NFPE Schools**

Sl No	Name of partner	No. of class II schools	Students in class II schools				
			Boys		Girls		Total
			No.	%	No.	%	
1	CCD	05	45	30	105	70	150
2	RDF	05	44	29	106	71	150
3	Piact-Bangladesh	05	43	29	107	71	150
4	Probaha SS Sangstha	05	45	30	105	70	150
5	Uthsarga	05	35	23	115	77	150
6	Juba Unn. SS Samity	05	45	30	105	70	150
7	SHIMANTIK	05	45	30	105	70	150
8	RIC	05	54	36	96	64	150
9	Shacrio Sangha	05	36	24	114	76	150
10	Purbasha Juba Sangha	05	36	24	114	76	150
11	Bonoful	05	45	30	105	70	150
12	FDA	05	41	27	109	73	150
13	Pally Bikash Kendra	05	49	33	101	67	150
14	Adarsha Paribar Sangstha	05	45	30	105	70	150
15	Sabalambay Unnayan Samity	04	35	29	85	71	120
16	CDA (Netrokona)	05	32	21	118	79	150
17	Mouchas Unnayan Sangstha	05	52	35	98	65	150
18	Unmesh Mohila Club	05	20	13	130	87	150
19	Nari Uddug Kendra	05	37	25	113	75	150
20	Uttaran Mohila Sangstha	05	04	3	146	97	150
21	Kanchan Samity	05	40	27	110	73	150
22	UST	05	37	25	113	75	150
23	Life-Bangladesh	05	43	29	107	71	150
24	ASHRAI	05	45	30	105	70	150
25	TSP	05	25	17	125	83	150
26	VERC	05	41	27	109	73	150
Total		129	1019	26	2851	74	3870

Student in Class I ESP NFPE schools

Sl No	Name of partner	No. of class I schools	Students in class II schools				
			Boys		Girls		Total
			No.	%	No.	%	
1	CCD	05	45	30	105	70	150
2	RDF	05	45	30	105	70	150
3	Piact-Bangladesh	05	40	27	110	73	150
4	Probaha SS Sangstha	05	45	30	105	70	150
5	Uthsarga	05	24	16	126	84	150
6	Juba Unn. SS Samity	05	37	25	113	75	150
7	SHIMANTIK	05	45	30	105	70	150
8	RIC	05	45	30	105	70	150
9	Shacrio Sangha	05	38	25	112	75	150
10	Purbasha Juba Sangha	05	34	23	116	77	150
11	Bonoful	05	45	30	105	70	150
12	FDA	05	37	25	113	75	150
13	Pally Bikash Kendra	05	46	30	104	70	150
14	Adarsha Paribar Sangstha	05	45	30	105	70	150
15	Sabalambay Unnayan Samity	05	49	33	101	67	150
16	CDA (Netrokona)	05	32	21	118	79	150
17	Mouchas Unnayan Sangstha	05	49	33	101	67	150
18	Unmesh Mohila Club	05	32	21	118	79	150
19	Nari Uddug Kendra	05	37	25	113	75	150
20	Uttaran Mohila Sangstha	05	20	13	130	87	150
21	Kanchan Samity	05	40	27	110	73	150
22	UST	05	33	22	117	78	150
23	Life-Bangladesh	05	27	18	123	82	150
24	ASHRAI	05	35	23	115	77	150
25	TSP	05	45	30	105	70	150
26	BAWPA	10	80	27	220	73	300
27	Bikalpa Unn. Karmashuchi (BUK)	05	37	25	113	75	150
28	Social Dev. Society	05	26	17	124	83	150
29	Samajik Unn. Sangstha	05	40	27	110	73	150
30	Pally Gana Unn. Kendra	05	35	23	115	77	150
31	ALOSHIKHA	05	40	27	110	73	150
32	Integrated Social Dev. (ISD)	05	39	26	111	74	150
33	SANKALPA	05	39	26	111	74	150
34	SETU	05	44	29	106	71	150
35	Jagrata Juba Sangha	05	37	24	113	76	150
36	Polli Unn. Kendra (VDC)	05	24	16	126	84	150
37	Sacho Dev. Centre	05	40	27	110	73	150
38	FPAB	05	40	27	110	73	150
39	CDA (Dinajpur)	05	42	28	108	72	150
40	Pally Progati Sangstha	05	35	23	115	77	150
41	FFH	05	42	28	108	72	150
42	SAMATA	05	35	23	115	77	150
43	MOUKHARA	05	32	21	118	79	150
44	Shibgonj Seba Complex	05	12	8	138	92	150
45	MOUSUMI	05	15	10	135	90	150
46	Dwip Inn Sangstha	05	49	33	101	67	150
Total		235	1753	25	5297	75	7050

Appendix C**Attendance in class I ESP NFPE schools**

Sl No	Name of Organization	No. of Schools	Enrollment			Avg. enrol- lment	Avg. Attend- ance
			Boys	Girls	Total		
1.	Bikalpa Unn. Karmashuchi	5	37	113	150	30	27.17
2.	Social Dev. Society	5	26	124	150	30	26.69
3.	Samajik Unn. Sangstha	5	40	110	150	30	26.64
4.	Palli Gana Unn. Kendra	5	35	115	150	30	26.56
5.	ALOSHIKHA	5	40	110	150	30	28.09
6.	Integrated Social Dev.	5	39	111	150	30	26.84
7.	SANKALPA	5	39	111	150	30	27.78
8.	SETU	5	44	106	150	30	29.30
9.	Jagrata Juba Sangha	5	37	113	150	30	27.68
10.	Palli Unn. Kendra (VDC)	5	24	126	150	30	26.98
11.	Sahco Dev. Centre	5	40	110	150	30	27.77
12.	FPAB	5	40	110	150	30	28.75
13.	CDA (Dinajpur)	5	42	108	150	30	28.49
14.	Pally Progati Sangstha	5	35	115	150	30	28.02
15.	FEH	5	42	108	150	30	27.85
16.	SAMATA	5	35	115	150	30	27.82
17.	MOUKHARA	5	32	118	150	30	28.16
18.	Shibgonj Seba Complex	5	12	138	150	30	28.26
19.	MOUSUMI	5	15	135	150	30	28.63
20.	Dwip Unn. Sangstha	5	49	101	150	30	28.63
21.	CDA (Netrokona)	5	32	118	150	30	29.96
22.	Nari Uddug Kendra	5	37	113	150	30	29.13
23.	CCD	5	45	105	150	30	29.13
24.	SHIMANTIK	5	45	105	150	30	28.58
25.	Muchas Unn. Sangstha	5	49	101	150	30	29.37

Sl No	Name of Organization	No. of Schools	Enrollment			Avg. enrol- lment	Avg. Attend- ance
			Boys	Girls	Total		
26.	Purbasha Juba Sangho	5	34	116	150	30	28.43
27.	UST	5	33	117	150	30	28.35
28.	Kanchan Samity	5	40	110	150	30	28.64
29.	ASHRAI	5	35	115	150	30	28.37
30.	Unmesh Mohila Club	5	32	118	150	30	29.23
31.	Adarsha Paribar Sangstha	5	45	105	150	30	29.49
32.	Life-Bangladesh	5	27	123	150	30	28.43
33.	BONOFUL	5	45	105	150	30	29.12
34.	Piact - Bangladesh	5	40	110	150	30	28.46
35.	Uttaran Mohila Sangstha	5	20	130	150	30	29.53
36.	Sabalamby Unn. Samity	5	49	101	150	30	28.94
37.	RDF	5	45	105	150	30	26.69
38.	Shacrio Shangho	5	38	112	150	30	27.99
39.	TSP	5	45	105	150	30	29.34
40.	Juba Unnayan S.S. Samity	5	37	113	150	30	27.90
41.	FDA	5	37	113	150	30	28.03
42.	RIC	5	45	105	150	30	27.05
43.	UTHSARGA	5	24	126	150	30	29.49
44.	Probaha SS Sangstha	5	45	105	150	30	28.02
45.	Pally Bikash Kendra	5	46	104	150	30	29.49
46.	BAWPA	10	80	220	300	30	28.78
	Total	235	1753	5297	7050	30	28.40

Attendance in class II ESP NFPE schools

Sl No	Name of Organization	No. of Schools	Enrollment			Avg. enrol- lment	Avg. Atten- dance
			Boys	Girls	Total		
1.	CDA (Netrokona)	5	32	118	150	30	29.10
2.	Nari Uddug Kendra	5	37	113	150	30	28.58
3.	CCD	5	45	105	150	30	28.52
4.	SHIMANTIK	5	45	105	150	30	28.18
5.	Mouchas Unn. Sangstha	5	52	98	150	30	28.89
6.	Purbasha Juba Sangho	5	36	114	150	30	28.05
7.	UST	5	37	113	150	30	28.25
8.	Kanchan Samity	5	40	110	150	30	27.15
9.	ASHRAI	5	45	105	150	30	25.90
10.	Unmesh Mohila Club	5	20	130	150	30	28.93
11.	Adarsha Paribar Sangstha	5	45	105	150	30	29.49
12.	Life-Bangladesh	5	43	107	150	30	28.10
13.	BONOFUL	5	45	105	150	30	27.64
14.	Piact-Bangladesh	5	43	107	150	30	27.41
15.	Uttaran Mohila Sangstha	5	04	146	150	30	28.84
16.	Sabalamby Unn. Samity	4	35	85	120	30	28.08
17.	RDF	5	44	106	150	30	26.40
18.	Shacrio Shangho	5	36	114	150	30	27.54
19.	TSP	5	25	125	150	30	27.05
20.	Juba Unnayan S.S. Samity	5	45	105	150	30	27.65
21.	FDA	5	41	109	150	30	28.27
22.	RIC	5	54	96	150	30	27.83
23.	UTHSARGA	5	35	115	150	30	28.54
24.	Probaha SS Sangstha	5	45	105	150	30	26.95
25.	Pally Bikash Kendra	5	49	101	150	30	28.72
26.	VERC	5	41	109	150	30	28.13
	Total	129	1019	2851	3870	30	28.01

Teachers in ESP NFPE schools

Sl No	Name of organization	No. of Schools	Teachers						
			Sex			Academic Qualification		Marital Status	
			Male	Female	Total	Below SSC	SSC & above	Married	Unmarried
1	CCD	10	-	10	10	1	9	2	8
2	RDF	10	-	10	10	2	8	7	3
3	Piact-Bangladesh	10	-	10	10	8	2	7	3
4	Probaha S.S. Sangstha	10	-	10	10	2	8	8	2
5	Uthsarga	10	-	10	10	5	5	10	-
6	Juba Unn. S.S. Samity	10	-	10	10	6	4	6	4
7	Shimantik	10	-	10	10	7	3	1	9
8	RIC	10	-	10	10	-	10	6	4
9	Shacrio Sangha	10	1	9	10	1	9	9	1
10	Purbasha Juba Sangha	10	-	10	10	-	10	8	2
11	Bonoful	10	2	8	10	2	8	6	4
12	FDA	10	-	10	10	5	5	9	1
13	Pally Bikash Kendra	10	-	10	10	-	10	9	1
14	Adarsha Paribar Sangstha	10	-	10	10	-	10	9	1
15	Sabalamby	9	-	9	9	-	9	7	2
16	CDA (Netrokona)	10	-	10	10	-	10	10	-
17	Mouchas Unn. Sangstha	10	-	10	10	-	10	10	-
18	Unmesh Mohila Club	10	-	10	10	-	10	9	1
19	Nari Uddug Kendra	10	-	10	10	-	10	8	2
20	Uttaran Mohila Sangstha	10	-	10	10	2	8	7	3
21	Kanchan Samity	10	-	10	10	-	10	9	1
22	UST	10	1	9	10	-	10	10	-
23	Life-Bangladesh	10	2	8	10	8	2	8	2
24	ASHRAI	10	2	8	10	9	1	9	1
25	TSP	10	-	10	10	-	10	9	1
26	VERC	5	-	5	5	-	5	4	1
27	BAWPA	10	-	10	10	1	9	9	1

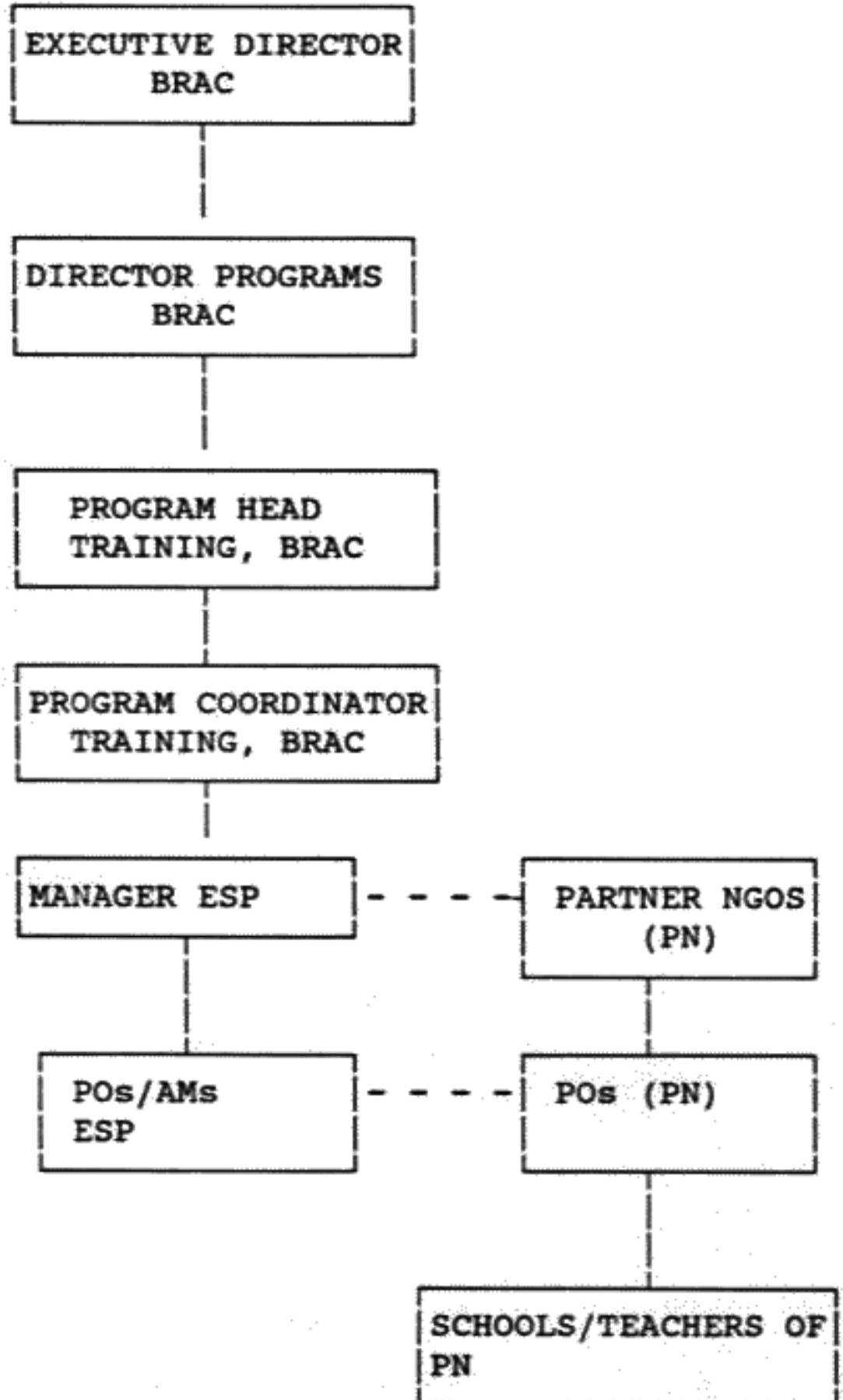
Teachers in ESP NFPE schools

Sl No	Name of organization	No. of Schools	Teachers						
			Sex			Academic Qualification		Marital Status	
			Male	Female	Total	Below SSC	SSC & above	Married	Unmarried
28	Bikalpa Unn. Karmashuchi	5	-	5	5	1	4	5	
29	Social Dev. Society	5	-	5	5	-	5	3	
30	Samajik Unn. Sangstha	5	-	5	5	-	5	3	
31	Pally Gana Unn. Kendra	5	-	5	5	1	4	2	
32	ALOSHIKHA	5	1	4	5	1	4	5	
33	Integrated Social Dev.	5	1	4	5	1	4	5	
34	Sanghitha Karma Sangsthan Prokalpa (SANKALPA)	5	-	5	5	-	5	3	
35	SETU	5	-	5	5	2	3	4	
36	Jagrata Juba Sangha	5	1	4	5	2	3	4	
37	Polli Unn. Kendra (VDC)	5	1	4	5	2	3	3	
38	Sacho Dev. Centre	5	-	5	5	2	3	4	
39	FPAB	5	-	5	5	-	5	5	
40	CDA (Dinajpur)	5	-	5	5	1	4	4	
41	Pally Progati Sangstha	5	-	5	5	-	5	3	
42	FEH	5	1	4	5	2	3	3	
43	SAMATA	5	-	5	5	4	1	5	
44	MOUKHARA	5	2	3	5	2	3	4	
45	Shibganj Seba Complex	5	-	5	5	-	5	5	
46	Mousumi	5	-	5	5	1	4	5	
47	Dwip Unn. Sangstha	5	-	5	5	5	-	5	
Total		364	15	349	364	84	280	286	

Programme Structure and Management

Education Support Program (ESP)

Organization Chart



Appendix G

ESP/BRAC
Monitoring of NFPE
Undertaken by Partner Organization

Name of organization:

Date of Visit:

Number of School: Class I- , Class II- , Class III- , Total-

Name of NFPE PO(s):

Rank the following

	Not Good	Some what	Good	Very good	Exce-llent
1. Preservation of NFPE materials	1	2	3	4	5
2. Maintenance of registers	1	2	3	4	5
3. Documentation and filing	1	2	3	4	5
4. Reporting	1	2	3	4	5
5. Preparation of weekly action plan by P.O.	1	2	3	4	5
6. Organization and facilitation of monthly teacher refresher	1	2	3	4	5
7. School visit by P.O.	1	2	3	4	5
8. Organization and facilitation of parents meeting	1	2	3	4	5
9. Ontime supply of NFPE materials to schools	1	2	3	4	5
10. Regular payment of teacher salaries	1	2	3	4	5
11. Physical environment of schools	1	2	3	4	5
12. Placement and usage of blackboards and calendars	1	2	3	4	5
13. Punctuality of teachers	1	2	3	4	5
14. Preparation of lesson plan by the teachers	1	2	3	4	5
15. Teachers' behaviour with the students	1	2	3	4	5
16. Instructional strategies followed by teachers	1	2	3	4	5

Continuation of Appendix G

17. Evaluation of students achievement and application of corrective procedures	1	2	3	4	5
18. Correction of home works and providing feedbacks	1	2	3	4	5
19. Attendance of students	1	2	3	4	5
20. Alertness of students	1	2	3	4	5
21. Confidence of students	1	2	3	4	5
22. Students participation in classroom activities	1	2	3	4	5
23. Students reading skill and comprehension in Bengali	1	2	3	4	5
24. Spelling ability of students	1	2	3	4	5
25. Writing skill of students	1	2	3	4	5
26. Students' ability to read key words in social studies	1	2	3	4	5
27. Concepts of students in social studies	1	2	3	4	5
28. Students' concepts of number	1	2	3	4	5
29. Students' concepts of addition	1	2	3	4	5
30. Students' concepts of subtraction	1	2	3	4	5
31. Students' concepts of multiplication	1	2	3	4	5
32. Students' concepts of division	1	2	3	4	5
33. Students' reaction speed to the problem of addition, subtraction and multiplication	1	2	3	4	5
34. Students' performance in cocurricular activities	1	2	3	4	5

Scores: Total -
Average -

Name and Signature :

ESP areas

Area	NGO covered	NFPE location	ESP PO (incharge)
1	Bonoful Jagrata Jubo Shangha SETU Purbasha Juba Shangha Shacrio Sangho Faridpur Development Agency (FDA) Sahco Development Centre (SDC) Palli Unnayan Kendra (VDC) Uttaran	Khulna Khulna Kustia Kumarkhali, Kustia Bheramara, Kustia Faridpur Madaripur Madaripur Tala, Satkhira	A.K.M. Khurshid Alam
2	B'desh Family Planning Association Unmesh Mohila Club Mouchas Unnayan Sangstha (MUS) Adarsha Paribar Sangstha Sabalamby Unnayan Samity (SUS) Community Development Association (CDA) Palli Bikash Kendra Nari Uddug Kendra (NUK) VERC BAWPA	Jamalpur Gopalpur, Tangail Madhupur, Tangail Gouripur, Mymensingh Netrokona Netrokona Pakundia, Kishoregong Savar Savar Sarishabari	Md. Rezaul Karim
3	Life Bangladesh Kanchan Samity Community Development Association (CDA) Foundation for Edu. & Health Welfare UST Palli Progoti Sangstha Uttaran Mohila Sangstha Gana Unnayan Kendra	Saidpur Dinajpur Dinajpur Lalmonirhat Gaibandha Nandigram, Bogra Serajgonj Nasratpur, Gaibandha	Habibur Rahman
4	Shibgonj Seba Complex Moukhara B.S.K. Sangstha Ashrai Together for Service of people Samata Samaj Kallayan Smity MOUSUMI Dulai Gono Kallayan Samity Bachte chai	Chapai-N'gonj Natore Naogaon Faridpur, Pabna Pabna Naogaon Dulai, Pabna Pabna	Sharif Naban Hossain

Area	NGO covered	NFPE location	ESP PO (incharge)
5	Bikalpa Unnayan Karmashuchi Social Development Society (SDC) Samajik Unnayan Sangstha Palli Gana Unnayan Kendra Alosikha Rajihar Social Development Centre Integrated Social Development Sanghathita Karma Sangsthan Prokalpa Resource Integration Centre (RIC) Social Institute	Barisal Barisal Jhalakathi Bakergonj, Barisal Agailjhara, Barisal Dhandopa, Barisal Patharghata, Borguna Pirojpur Daulatkhan, Bhola	Md. Sarwar Alam
6	Rural Development Foundation (RDF) SHIMANTIK Jubo Unnayan Samaj Seba Samity UTHSARGA Probaha S.S. Sangstha PIACT Centre for Community Development Dwip Unnayan Sangstha BAWPA	Laksam, Comilla Jokigonj, Sylhet Sarail, Brahmanbaria Bairab, Kisoregonj Narsingdi Araihasar, Narayangonj Daudkandi, Comilla Hatiya, Noakhali Kapasia, Gazipur	Md. Abdul Hamid