

THE ENGINEER & LOCAL  
CONSULTANT:



**BRAC UNIVERSITY NEW CAMPUS  
DHAKA, BANGLADESH**

THE CONTRACTOR:



**REQUEST FOR APPROVAL (RFA)**

To : ENGINEER  
Attention : ENGR. SYED MAZBAHUL MORSHAD  
Ref. No. : RFA-361-F  
Date Submitted : 2022/11/17  
Reply Date Required : ASAP

Subject :

- |                                       |  |  |  |
|---------------------------------------|--|--|--|
| <input type="checkbox"/> Drawings     | <input checked="" type="checkbox"/> Specifications | <input type="checkbox"/> Test Report           | <input checked="" type="checkbox"/> Method Statement   |
| <input type="checkbox"/> Calculations | <input type="checkbox"/> Sketches                  | <input checked="" type="checkbox"/> Design Mix | <input checked="" type="checkbox"/> Material submittal |

To ENGINEER:

We have finished 2 pcs samples of mineral silicate stain with different mix ratios (1:10 and 1:20) on CC3 concrete wall. (color number: 9543 (gray), size 1000 mm X 1000 mm) according to owner engineers request. Owner Architect verbally agreed to 1:20 mixing ratio. The marked picture of visual mock-up are shown below which is reviewed and selected.

Material reference RFA-361-D and RFA-361-E.

As per reference BOQ items (Ref. BOQ item no. 7.2.8.3 CC3: Off-Form Concrete with Mineral Silicate Stain, BOQ item no. 7.2.8.4 CC5: Mineral Silicate Stain on Timber Plank Off Form Concrete.

Distribution:

- BUCG-ABC JV     WOHA     WEB     BRACU     SDG     TRASSO     EMCS

Requested by: Han Chunwen  
(Print name of person raising the request)

Signature : 

Received by: \_\_\_\_\_

Signature : \_\_\_\_\_

**Reply**

To :

Date :

Comments:

Signature : \_\_\_\_\_

Print Name : \_\_\_\_\_

Consultants : \_\_\_\_\_

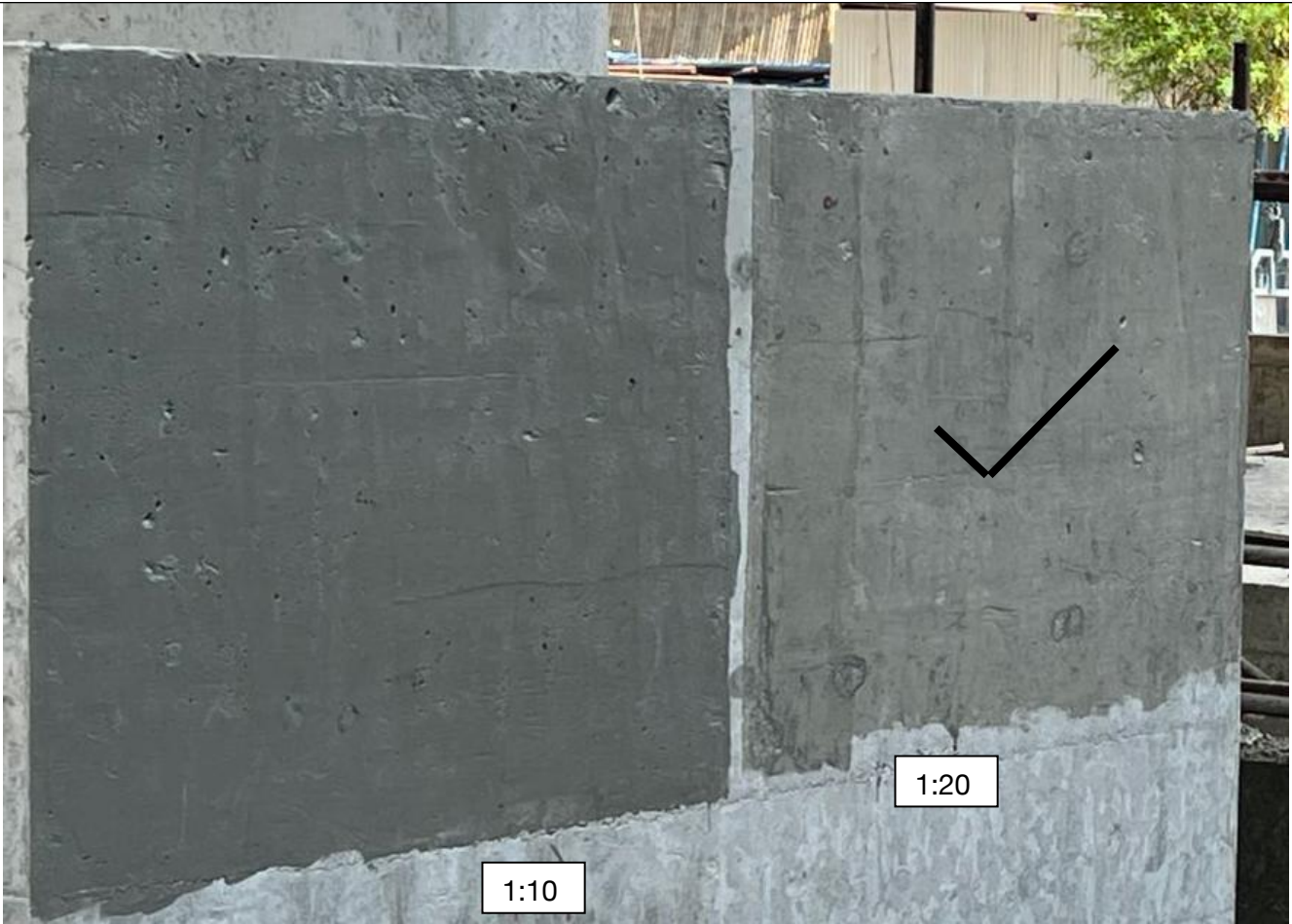


Fig.: Mock-up of VANLEI INORGANIC CONCRETE CURING

# VANLEI INORGANIC CONCRETE CURING

## 万磊混凝土无机养护剂



VANLEI INORGANIC CONCRETE CURING-A A 组分 18L, 20kg



VANLEI INORGANIC CONCRETE CURING-B B 组分 5L, 5kg

# VANLEI INORGANIC CONCRETE CURING

(component A+component B)



• **DESCRIPTION**

VANLEI INORGANIC CONCRETE CURING composed of silicate, acrylic emulsion and other inorganic additives, including component A and component B. It has higher hydrophobicity ,waterproof, and shielding concrete flaw as a protective sealer for concrete surface.

• **USES**

VANLEI INORGANIC CONCRETE CURING is ideal for unifying the appearance of concrete surfaces. Apply by roll or spray , it is suitable for concrete surface , decorative and water vapour permeable.

• **ADVANTAGE**

- ✓ Excellent flexibility - no cracks,as long as the base does not crack
- ✓ High strength adhesion - has better adhesion to concrete surface.

- ✓ Waterproof- it can be used outdoors for a long time ,resist scouring of rain
- ✓ Rich in color - customized color

• **COVERAGE**

The coverage will vary depending on application technique, substrate, and finish. The following are typical ranges:

PRODUCT	COLOR	WEIGHT	CONVERAGE(2 layers)
component A	white/customized color	18L,20 kg/barrel	5-6sqm/ kg
component B	transparent	5L,5 kg/barrel	5-6sqm/ kg

• **LIMITATIONS**

Base surface shall be dry and clean,flat without crack.  
 Do not apply if ambient temperature is below 10°C and the relative humidity is greater than 85%.  
 Before applying a new layer, the previous one must hard dry.

# VANLEI

## INORGANIC CONCRETE CURING

(component A+component B)



### • PHYSICAL PROPERTIES

Density	1.3 ± 1g/cm <sup>3</sup>
sd (H2O)	0.02 m
pH-value	9-11
Water resistance	≥1000 times
Weather resistance	surface stable after drying for 24 hours
Service life	10 years

### • POT LIFE

The pot life of the mixture (component A + component B) is 5 hours at approx. 20°C. (Under sealed condition).

### • CLEANING

Clean all tools and equipment promptly with clean water.

### • STORAGE

Keep material sealed covered to prevent exposure to moisture.

Store in a dry, cool and well-ventilated place, away from

### • SAFETY PRECAUTIONS

KEEP OUT OF REACH OF CHILDREN. DO NOT TAKE INTERNALLY.

May Irritating to eyes and skin. Wear protective gloves, safety goggles and dust mask during applications .

#### FIRST AID:

Eyes - Do not rub eyes, immediately flush with fresh water.

Skin - Wash with soap and water.

Inhalation - If experience difficulty breathing or if inhaled, move to fresh air. If

symptoms persist, seek medical attention.

### • APPLICATION

#### Notes:

Before applying VANLEI INORGANIC CONCRETE CURING ,the concrete surface must be clean and free from any loose particles.

#### 1.Mixing and stirring

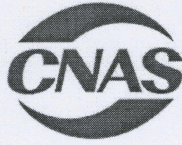
Mix component A and component B according to the required proportion and stir evenly. (component A is white / customized color, and can be mixed with component B in any proportion)

#### 2. Roll

Apply the mixed inorganic curing(white / customized color) with roller, and it is recommended to apply it for 2-3 times. The second layer shall be applied after the first layer completely dry. The recoating time is 4 hours.

#### 3. Standing curing

After applied, it will be achieved the best effect at least 7 days.



中国认可  
国际互认  
检测  
TESTING  
CNAS L0153

No. : SH1901510



2017(粤)质监认字039号

# 检验报告

## TEST REPORT

样品名称: 无机涂料

Sample Description

商标/型号: 万磊 白色

Brand /Model

委托单位: 佛山市南海万磊建筑涂料有限公司 万磊建筑涂料有限公司

Applicant

For and on behalf of  
FOSHAN CITY NANHAI WANLEI BUILDING PAINT CO.,LTD.

*(Handwritten Signature)*

Authorized Signature(s)

检验类别: 委托检验

Test Type



广东产品质量监督检验研究院

Guangdong Testing Institute of Product Quality Supervision




No: SH1901510

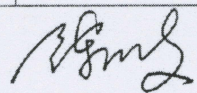
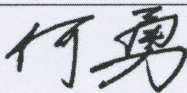
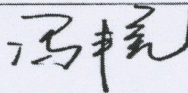
## 广东产品质量监督检验研究院

Guangdong Testing Institute of Product Quality Supervision

## 检验报告 (Test Report)

共 2 页 第 1 页

样品名称 Sample Description	无机涂料	生产日期 Manufactured Date	-----
		生产批号 Serial No.	2019年04月10日
商标、型号 Brand、Model	万磊 白色	收样单号 Voucher No.	C1802595
受检单位 Inspected Entity	-----	检验类别 Test Type	委托检验
委托单位 Applicant	佛山市南海万磊建筑涂料有限公司	样品数量 Sample Quantity	5kg
生产单位 Manufacturer	佛山市南海万磊建筑涂料有限公司	抽样基数 Sampling Base	-----
抽样地点 Sampling Place	佛山市南海万磊建筑涂料有限公司	抽样日期 Sampling Date	2019年04月26日
抽样单位 Sampling Entity	青南燕 Authorized Signature	检验日期 Tested Date	2019年06月11日
样品特征和状态 Sample Character and State	完好		
检验依据 Testing reference	见结果页。		
判定依据 Judging reference	JG/T 26-2002 《外墙无机建筑涂料》(II型)		
<b>检验结论 (Test Conclusion) :</b>			
本次委托检验共检13项, 所检项目全部符合标准的要求。			
 检验检测专用章 Issued by (stamp) 检验日期: 2019年06月11日 复印报告未重盖红色“检验检测专用章”无效 No copy of this report is valid without original red stamp of testing body			
备注 Remarks	1. 组分比例: 漆:水=1:0.05 (质量比); 2. 商标信息由委托单位提供。		

批准:  
Approved by审核:  
Checked by主检:  
Tested by

广东省佛山市顺德区大良新城区德胜东路1号

Tel: 0757-22808888

Fax: 0757-22802600



No: SH1901510

广东产品质量监督检验研究院

Guangdong Testing Institute of Product Quality Supervision

检验报告 (Test Report)

For and on behalf of  
FOSHAN CITY NANHAI WANLEI BUILDING PAINT CO., LTD.  
佛山市南海万磊建筑涂料有限公司



共 2 页 第 2 页

序号	检验项目	检验依据	判定依据要求	单位	检测结果	判定	
1	容器中状态	JG/T 26-2002	搅拌后无结块, 呈均匀状态	----	符合	合格	
2	施工性	JG/T 26-2002	涂刷二道无障碍	----	符合	合格	
3	涂膜外观	JG/T 26-2002	涂膜外观正常	----	符合	合格	
4	对比率 (白色和浅色)	JG/T 26-2002	≥0.95	----	0.96	合格	
5	热贮存稳定性 (30d)	JG/T 26-2002	无结块、凝聚、霉变现象	----	符合	合格	
6	低温贮存稳定性 (3次)	JG/T 26-2002	无结块、凝聚现象	----	符合	合格	
7	表干时间	GB/T 1728-1979 (1989)	≤2	h	<2	合格	
8	耐洗刷性	GB/T 9266-2009	≥1000	次	1000次通过	合格	
9	耐水性 (168h)	GB/T 1733-1993	无起泡、裂纹、剥落, 允许轻微掉粉	----	无起泡、裂纹、剥落, 无掉粉	合格	
10	耐碱性 (168h)	GB/T 9265-2009	无起泡、裂纹、剥落, 允许轻微掉粉	----	无起泡、裂纹、剥落, 无掉粉	合格	
11	耐温变性 (10次)	JG/T 25-2017	无起泡、裂纹、剥落, 允许轻微掉粉	----	无起泡、裂纹、剥落, 无掉粉	合格	
12	耐沾污性	JG/T 26-2002	≤15	级	15	合格	
13	耐人工老化性 (白色和浅色) (500h)	外观	不起泡、不剥落、无裂纹	----	符合	合格	
		粉化	GB/T 1865-2009	≤1	级	0	合格
		变色	GB/T 1766-2008	≤2	级	1	合格

**万磊混凝土无机养护剂 (A/B双组份) 技术参数对比**  
**VANLEI INORGANIC CONCRETE CURING DATA SHEET COMPARING**

对比项目 Comparison	KEIM-混凝土涂层 KEIM CONCRETAL®-LASUR	VANLEI-混凝土无机养护剂-A组分 VANLEI INORGANIC CONCRETE CURING-A	KEIM-混凝土固定剂 KEIM CONCRETAL®-FIXATIV	VANLEI-混凝土无机养护剂-B组分 VANLEI INORGANIC CONCRETE CURING-B
主要成分 Main raw materials	硅溶胶、硅酸钾和纯丙烯酸酯 silica sol, potassium silicate and pure acrylate	硅酸盐、丙烯酸乳液 Silicated & acrylic emulsion	由硅酸钾、硅溶胶和有机添加剂 silicate, silica sol and organic additives	硅酸盐无机涂料 Inorganic silicate
产品作用 Product use	隐藏污渍或维修混凝土颜色阴影 repairs with a concrete colour shade and for colour wash finishes	隐藏污渍或维修混凝土颜色阴影、混凝土保护 repairs with a concrete colour shade and for colour wash finishes	混凝土表面透气、保护 Ventilation and protection of concrete surface	混凝土表面透气、保护 Ventilation and protection of concrete surface
比重 Density	1.1-1.3g/cm <sup>3</sup>	1.3 ± 1g/cm <sup>3</sup>	1.0 - 1.1 g/cm <sup>3</sup>	1.0 ± 0.1g/cm <sup>3</sup>
蒸汽扩散阻力 sd ( H2O)	0.02 m	0.02 m	无数据 N/A	无数据 N/A
颜色稳定性 Colour stability	A1	无数据 N/A	无数据 N/A	无数据 N/A
pH值 pH-value	无数据 N/A	9	11	10-11
耐水性 Water resistance	无数据 N/A	≥1000次 over 1000 times	无数据 N/A	耐水性强, 不易返碱 strong water resistance
耐候性 Weather resistance	无数据 N/A	无数据 N/A	无数据 N/A	实验室内烘干24小时后, 表面无任何变化 surface stable after drying for 24 hours
局限场景 Limitation	不适用于水平和倾斜的风化表面 not suitable for horizontal and inclined weathered surfaces	无 N/A	不适用于水平和倾斜的风化表面 not suitable for horizontal and inclined weathered surfaces	无 N/A
颜色 Color range	白色, 混凝土灰色阴影和根据KEIM的调色板独家色板 white or any colors follow KEIM color card	白色、任意颜色 white or any colors	牛奶状 Milky	全透明 transparent
使用寿命 Service life	无数据 N/A	10年 10 years	无数据 N/A	10年 10 years